

RAM SALE Friday November 4, 2016
72 Rams



The Mountain Dam
The **Mountain Dam**

MERINO STUD

Flock No. 4572
Brucellosis Accredited
OJD eligible into S.A.

**21st ANNUAL RAM SALE
ON PROPERTY**

72 RAMS

Friday November 4, 2016

**Inspection 10.00 am
Lunch Provided
Helmsman Sale 1.00 pm**

**Mini Auction and/or Private Rams available for
selection at the completion of the Helmsman Auction**

“The Mountain Dam”
429 Silcocks Road, Telangatuk East, Vic. 3401
Tom, Alison, John & Merty Silcock
Phone: 03 5388 2288
Tom: 0419 882 239
Email: tom@themountaindam.com.au
www.facebook.com/themountaindam
Website: www.themountaindam.com.au



**Assistant Stud Classers:
Adrian Menzel 0427 742 360
Dale Burns 0458 899 918**

**5% REBATE TO AGENTS AND
PROFESSIONAL CLASSERS**

NEGATIVE OJD STATUS

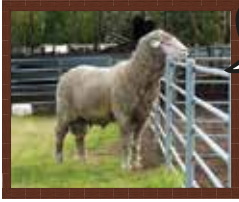
All rams have been vaccinated for Johne's and are bred from vaccinated ewes. They are sold with an animal health status document along with required testing to access South Australia. To quote David Rendell (Hamilton Veterinarian from Livestock Logic) *"Your excellent bio security and long history of vaccination makes you one of the safest merino flocks with or without MAP"*.

**PRELIMINARY NOTICE
ANNUAL REDUCTION
SHEEP SALES**

24 NOVEMBER
OFFERING ON AUCTION PLUS

Excess stud ewes / commercial ewes / wether lambs

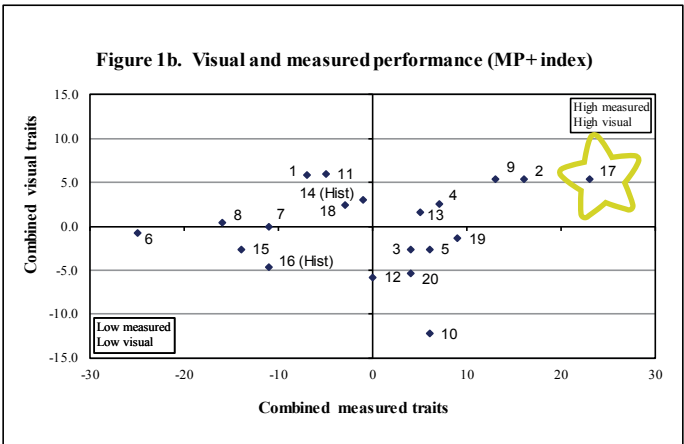
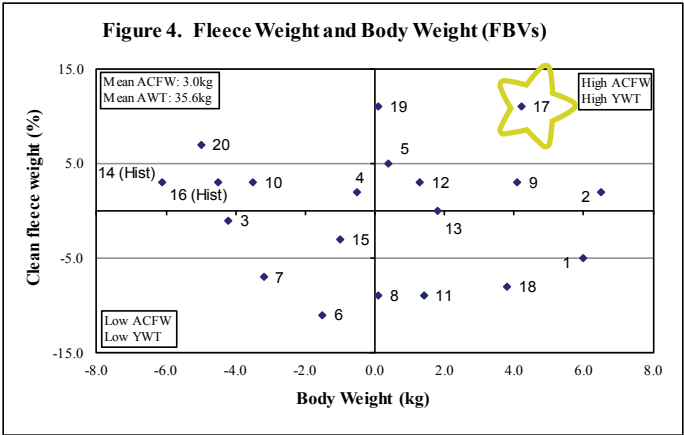
High performance merino rams for your breeding program



If you want breeding results, see mine!

50457220111RE017
(see No. 17):

Trait Leader for DP+, MP+ and FP+ Indexes,
plus Classer's Grade in
Elders Balmoral Sire Evaluation 2014 Drop.



Source of graphs: Elders Balmoral 2014 Drop Trial Report, AMSEA

**A sire that truly balances measured productivity and visual correctness.
Semen available for sale.**

SALE SUMMARY

All sheep are for genuine sale at/or above the opening bid listed.

Helmsman Auction

Lots 1 – 60

2015 drop rams

Opening bid \$800

Private/Mini Auction Rams

Lots 61 – 72

2015 drop rams

\$800

Ram's Health

Vaccinated as lambs for Johne's disease

Shearing – Machine shorn 3 June 2016

Vaccinated regularly with 7 in 1, latest in September

Treated with Click for fly prevention

(on the head only) in September

- All sale details and catalogue explanations will be displayed on sale day.
- Please call if you would like any further information prior to the sale.

CATALOGUE HEADINGS USED

LOT 2016 Ram Sale lot number

TAG ID. Individual tag number of ram
Single or Twin is noted below the Tag Id. for their birth number

Background

- The 2015 drop rams had 6 months wool growth when shorn with an average micron of 14.7.
- EBV and ASBVs on fleece measurements use these test results

Rams Age

- Rams are mostly July/August drop and are 15-16 months of age on Sale Day.
- Some of tag prefix "SN" are late rams from September drop being 14 months of age on Sale Day. These are noted as: "14 Mths".

EBVs (Estimated Breeding Values) by Sue Jarvis. Genetic worth, or merit of an animal for a particular trait from comparisons made within flock using the Yearling results.

ASBVs (Australian Sheep Breeding Values) Merino Select indexes for across flocks evaluation from Sheep Genetics using the Yearling results.

CATALOGUE HEADINGS USED

EBVs/ASBVs	We have used all measurements in our Stud Records for this year's Sale Rams (e.g. parents, brothers, sisters, uncles, aunties, half brothers, half sisters etc.). Both EBVs plus ASBVs provide an estimation of genetic change for individual traits in progeny.
MIC	Micron test taken May 2016 plus Micron EBVs & ASBVs. Current micron test from mid side sample taken October will be displayed on Sale Day Charts
CV	Co-efficient of Variation actual test plus CV EBVs & ASBVs
SL	Staple Length actual test plus EBVs & ASBVs
CFW	Clean Fleece Weight percentage (100 = Average) plus Clean Fleece Weight EBVs & ASBVs
WWT	Weaner body weight taken 19/10/2015 plus ASBVs
YWT	Yearling body weight taken 25/7/2016 plus EBVs & ASBVs

CATALOGUE HEADINGS USED

- EMD** Yearling EMD - Muscle Depth (mm)
taken 25/7/2016
Plus ASBVs
- FAT** Yearling FAT – Fat Depth (mm) taken
25/7/2016
Plus ASBVs
- 10%+SS+WEC** Our preferred Index used for breeding
objective in a high rainfall, with a high
stocking rate to improve fleece weight,
fibre diameter, body weight, staple
strength and worm resistance.

PURCHASER

The Mountain Dam

SIRES

TAG PREFIX

Sale Ram Tag	Ram's Sire
BUA	SEMEN - BUNDILLA
ESB	11/ESA004
ESE	13/ESB019
HAA	SEMEN - HAZELDEAN
LEB	12/LE001
NBM	10/NBL007
NBQ	11/NBM033
NBS	13/NBQ007
PEA	SEMEN - PEMCAW
RH	13/RG059
SN	SYNDICATE 2011 - ESA004, ESA008
STD	13/STC086
X	DNA TESTED SIRES IDENTIFIED - 09/WI029, 11/RE008, 12/X878, 13/RF041 & 1 UNKNOWN
YAA	SEMEN - YANKO

The Mountain Dam
The Mountain Dam

Lots 1 – 60

HELMSMAN

AUCTION

2015 drop rams

Opening bid \$800

LOT	TAG ID	MIC	CV	SL	CFW	WWT	YWT	EMD	FAT	10% + SS + WEC	PURCHASER
1	15/PEA032	14.7	17.7	60.0	101.8	31.5	53.0	23.0	3.0		
	Twin										
		-0.6	0.9	1.2	5.0		9.0			108.1	
	ASBVs	-1.3	0.4	6.0	16.4	3.4	6.4	-1.1	-0.4	147.9	
2	15/LEB081	15.4	15.7	53.0	104.1	28.5	48.0	22.0	3.0		
	Twin										
		0.0	0.0	-2.0	-4.9		3.7			91.8	
	ASBVs	-1.1	-0.6	3.3	3.7	1.1	4.5	0.1	0.2	114.6	
3	15/LEB067	15.2	15.8	67.0	104.7	28.5	47.5	25.0	3.5		
	Twin										
		-0.2	0.2	2.5	-1.8		-2.3			91.4	
	ASBVs	-1.1	-1.1	7.2	3.7	0.3	1.1	0.5	0.1	114.9	
4	15/ESE053	14.3	17.5	66.0	97.1	36.0	40.5	21.0	3.0		
	Twin										
		-0.7	0.1	7.8	3.6		-0.5			109.0	
	ASBVs	-1.6	-0.9	9.2	4.8	2.2	1.1	0.3	0.2	132.4	
5	15/ESE056	14.3	14.0	57.0	94.7	29.0	44.5	22.0	3.0		
	Single										
		-0.6	-0.8	-0.2	-2.4		0.7			105.1	
	ASBVs	-1.8	-1.4	3.4	-4.0	0.2	1.2	0.1	0.1	118.2	
6	15/PEA025	15.8	15.8	55.0	105.9	32.0	47.5	22.0	3.5		
	Twin										
		0.2	0.9	-0.2	-0.1		4.4			95.7	
	ASBVs	-0.6	-0.2	4.1	7.7	2.6	3.0	-0.1	0.5	127.2	

LOT	TAG ID	MIC	CV	SL	CFW	WWT	YWT	EMD	FAT	10% + SS + WEC	PURCHASER
7	15/X1022	14.1	17.0	66.0	109.4	35.5	48.5	24.0	3.5		
	Single	-0.8	-0.1	5.6	1.3		3.4			102.8	
		-1.7	-0.6	6.3	4.8	1.4	2.9	0.3	0.3	115.6	
8	15/ESB135	13.9	17.3	60.0	100.0	37.5	44.5	21.0	2.0		
	Single	-0.8	0.0	5.7	3.9		5.5			103.9	
		-1.9	-0.9	8.3	7.2	2.2	4.8	-0.3	-0.4	137.9	
9	15/SN2169	13.9	16.6	57.0	97.9	-	40.0	21.0	3.5		
	Twin 14 months	-1.2	-0.2	0.8	3.3		6.8			112.3	
		-2.3	-0.7	4.1	5.6	2.1	6.2	-0.1	0.2	144.4	
10	15/NBM179	14.5	17.9	56.0	104.7	33.5	43.5	23.0	3.0		
	Single	-0.4	0.5	-5.2	-4.4		0.0			98.0	
		-1.7	-0.6	2.5	-1.1	0.3	-0.1	0.5	0.1	113.9	
11	15/ESE038	14.1	18.6	57.0	87.1	31.5	43.5	21.0	2.5		
	Twin	-0.5	-0.1	2.3	-5.0		1.2			104.3	
		-1.8	-1.0	4.4	-0.7	1.5	2.1	-0.4	-0.4	131.7	
12	15/STD030	15.5	14.8	67.0	115.3	29.5	44.0	22.0	3.0		
	Single	0.0	-0.3	5.5	2.0		1.0			104.6	
		-1.1	-1.4	6.9	4.5	0.9	2.6	-0.2	0.2	127.0	

LOT	TAG ID	MIC	CV	SL	CFW	WWT	YWT	EMD	FAT	10% + SS + WEC	PURCHASER
13	15/X1024	15.9	17.6	69.0	120.6	31.5	57.0	25.0	3.0		
	Single	0.3	0.2	6.6	3.4		7.8			101.8	
		-0.8	-0.5	7.5	9.1	1.8	7.6	0.0	-0.1	124.1	
14	15/BUA012	16.2	19.8	67.0	116.5	35.5	48.5	23.0	3.0		
	Single	0.8	1.7	4.6	8.5		1.7			96.5	
		-0.5	-0.3	7.0	13.8	2.5	5.5	0.3	0.0	131.0	
15	15/ESE048	15.3	13.7	66.0	99.4	27.0	41.0	24.0	2.5		
	Twin	-0.1	-1.7	6.4	0.5		0.0			117.0	
		-1.2	-2.4	6.2	-1.2	0.9	1.2	0.6	-0.1	134.0	
16	15/X0650	15.3	15.7	72.0	105.3	34.0	49.0	23.0	3.0		
	Single	0.1	-1.1	7.9	-0.1		3.3			113.2	
		-0.8	-1.9	9.0	2.2	1.1	3.2	0.0	0.0	134.3	
17	15/YAA008	14.4	18.8	53.0	100.6	27.5	41.5	22.0	3.0		
	Single	-0.7	0.3	1.0	-2.1		-1.1			106.4	
		-1.5	-0.2	3.5	6.7	0.8	0.8	-0.3	0.0	133.1	
18	15/ESE037	15.6	18.6	64.0	98.8	24.0	41.5	22.0	3.0		
	Twin	0.0	0.5	7.5	5.4		3.2			108.4	
		-1.0	-0.8	8.4	9.1	2.0	4.5	0.3	0.3	137.9	

LOT	TAG ID	MIC	CV	SL	CFW	WWT	YWT	EMD	FAT	10% + SS + WEC	PURCHASER
19	15/ESB115	Yearling Actual	-	-	-	36.0	51.0	24.0	3.0		
	Single	EBVs	-0.3	3.9	5.2	6.7	6.7			114.8	
		ASBVs	-1.0	6.1	6.6	1.9	4.9	0.0	-0.1	139.6	
20	15/HAA027	Yearling Actual	14.5	65.0	121.2	32.5	49.5	25.0	3.0		
	Twin	EBVs	-0.3	7.2	8.9	7.4	7.4			123.7	
		ASBVs	-1.3	6.4	13.8	1.8	4.3	0.7	0.1	158.4	
21	15/LEB094	Yearling Actual	15.8	75.0	102.9	26.0	42.0	23.0	3.0		
	Twin	EBVs	-0.4	7.0	-0.4	-1.9	-1.9			107.2	
		ASBVs	-1.7	8.6	4.6	0.3	1.5	0.5	0.2	130.9	
22	15/ESB127	Yearling Actual	14.8	54.0	107.1	30.5	42.0	21.0	2.5		
	Single	EBVs	-0.7	0.6	7.2	3.6	3.6			112.0	
		ASBVs	-1.1	5.3	8.0	0.9	2.9	-0.3	-0.3	131.6	
23	15/BUA020	Yearling Actual	15.7	58.0	109.4	32.5	44.0	21.0	2.5		
	Single	EBVs	0.5	6.5	3.2	3.6	3.6			103.1	
		ASBVs	-0.6	5.3	12.6	1.8	3.6	0.0	-0.2	133.8	
24	15/ESE005	Yearling Actual	15.3	61.0	72.4	31.5	50.0	23.0	3.5		
	Single	EBVs	-0.2	7.3	-7.6	4.6	4.6			100.1	
		ASBVs	-1.0	4.7	-7.4	2.0	5.1	0.0	0.2	114.6	

LOT	TAG ID	MIC	CV	SL	CFW	WWT	YWT	EMD	FAT	10% + SS + WEC	PURCHASER
25	15/X1010	15.4	15.7	57.0	105.9	31.5	48.0	24.0	2.5		
	Single	0.1	-0.4	1.2	4.1		2.7			99.4	
		-1.0	-1.2	4.1	5.8	1.1	4.1	0.1	-0.2	115.3	
26	15/STD035	14.4	15.3	58.0	121.2	30.0	43.5	22.0	2.5		
	Twin	-0.7	-0.2	0.4	11.2		3.5			131.1	
		-1.8	-1.2	3.6	11.2	1.1	2.6	-0.1	-0.1	161.2	
27	15/NBS031	13.8	17.4	53.0	101.8	31.0	49.0	24.0	3.0		
	Single	-0.7	-0.1	-4.4	2.3		4.4			94.5	
		-2.1	-0.4	1.2	5.4	0.4	2.6	0.0	0.0	117.6	
28	15/NBM182	14.5	17.2	51.0	91.2	34.0	46.5	21.0	2.5		
	Single	-0.8	0.5	-3.6	-7.9		3.7			97.5	
		-1.8	-0.4	1.6	-3.0	0.6	2.0	-0.4	-0.5	117.6	
29	15/YAA015	15.1	16.6	68.0	94.7	29.5	45.5	20.0	3.0		
	Twin	-0.5	-0.5	6.4	4.2		5.5			115.1	
		-1.3	-0.9	8.0	7.1	1.7	4.5	-0.8	0.1	132.0	
30	15/ESE047	14.4	14.6	65.0	92.9	33.0	47.0	21.0	2.0		
	Twin	-0.6	-1.5	6.7	-1.8		4.1			110.8	
		-1.7	-1.6	5.7	-2.9	2.3	4.2	-0.5	-0.5	119.8	

LOT	TAG ID	MIC	CV	SL	CFW	WWT	YWT	EMD	FAT	10% + SS + WEC	PURCHASER
31	15/ESB137	15.6	14.1	59.0	100.0	30.5	46.5	22.0	3.0		
	Twin										
		Yearling Actual	EBVs	2.9	8.1	5.8					117.7
		ASBVs	-1.3	7.5	7.7	1.8	3.7	-0.2	-0.1	146.1	
32	15/X1003	16.5	17.0	45.0	94.1	29.0	42.5	21.0	3.0		
	Single										
		Yearling Actual	EBVs	-6.1	1.5	-3.2					94.4
		ASBVs	-1.3	0.0	2.8	0.3	1.1	-0.3	0.2	120.6	
33	15/ESE036	15.3	18.3	57.0	82.9	21.5	40.5	23.0	3.0		
	Twin										
		Yearling Actual	EBVs	5.1	2.0	3.6					109.3
		ASBVs	-1.0	5.3	2.8	1.6	4.8	0.7	0.5	133.4	
34	15/HAA012	14.7	17.7	68.0	118.8	32.0	43.0	23.0	2.5		
	Single										
		Yearling Actual	EBVs	9.0	7.1	-1.4					119.4
		ASBVs	-0.9	6.5	11.5	0.3	0.9	0.0	-0.4	145.1	
35	15/ESE009	14.2	18.4	58.0	94.1	28.5	37.5	21.0	2.0		
	Single										
		Yearling Actual	EBVs	4.4	6.9	-0.2					107.0
		ASBVs	0.1	8.0	0.8	0.8	0.8	-0.3	-0.5	118.8	
36	15/ESE040	14.9	16.1	54.0	88.2	31.0	39.5	22.0	2.5		
	Twin										
		Yearling Actual	EBVs	1.6	-0.3	-3.6					105.9
		ASBVs	-0.8	4.7	2.3	1.4	-0.6	0.1	-0.2	126.7	

LOT	TAG ID	MIC	CV	SL	CFW	WWT	YWT	EMD	FAT	10% + SS + WEC	PURCHASER
37	15/LEB083	Yearling Actual	14.8	15.5	66.0	85.9	29.0	41.0	23.0	2.0	
	Twin	EBVs	-0.5	-0.5	4.8	-5.3	1.0				101.7
		ASBVs	-1.4	-1.6	6.1	-2.4	1.1	3.0	0.5	-0.1	115.8
38	15/NBQ084	Yearling Actual	15.3	14.5	65.0	118.8	36.0	43.0	20.0	2.5	
	Single	EBVs	-0.2	-0.2	3.2	9.3	0.7				114.8
		ASBVs	-1.2	-0.8	7.3	11.0	0.5	-0.2	-0.6	-0.3	136.6
39	15/HAA021	Yearling Actual	14.8	16.2	62.0	102.4	33.0	45.5	22.0	2.5	
	Twin	EBVs	-0.4	-0.7	5.3	6.6	5.8				123.6
		ASBVs	-1.6	-1.5	4.1	5.5	2.1	2.6	-0.1	-0.3	143.5
40	15/YAA032	Yearling Actual	14.3	16.1	60.0	105.3	34.0	49.0	24.0	3.5	
	Single	EBVs	-0.7	-0.9	3.5	3.8	7.0				116.7
		ASBVs	-1.8	-1.2	3.5	4.1	1.8	3.6	-0.2	0.2	137.0
41	15/X0653	Yearling Actual	16.8	14.3	62.0	74.1	33.0	45.5	25.0	3.0	
	Twin	EBVs	0.6	-1.1	3.3	-4.9	1.7				93.3
		ASBVs	-0.2	-2.1	4.2	-8.4	1.6	2.7	1.2	0.4	93.0
42	15/ESB145	Yearling Actual	16.0	17.5	65.0	94.1	29.0	48.5	24.0	3.0	
	Twin	EBVs	0.0	-0.1	6.1	5.6	6.5				106.8
		ASBVs	-0.8	-1.5	7.9	4.7	2.6	5.8	0.1	-0.1	131.3

LOT	TAG ID	MIC	CV	SL	CFW	WWT	YWT	EMD	FAT	10% + SS + WEC	PURCHASER
43	15/ESB125	13.4	16.5	53.0	112.9	29.0	49.0	22.0	3.0		
	Single										
	Yearling Actual										
	EBVs	-1.5	0.2	-0.5	5.6		7.2			107.2	
	ASBVs	-2.6	-0.5	3.9	7.9	1.2	5.6	-0.4	-0.2	138.3	
44	15/YAA002	13.6	19.9	53.0	115.3	35.5	44.0	20.0	2.5		
	Single										
	Yearling Actual										
	EBVs	-1.0	1.4	0.0	1.8		0.0			106.0	
	ASBVs	-2.1	0.7	2.3	10.2	1.7	2.7	-1.0	-0.4	136.4	
45	15/X1017	15.2	19.1	57.0	131.8	31.0	47.0	22.0	2.5		
	Single										
	Yearling Actual										
	EBVs	0.0	1.2	0.9	10.0		-0.8			105.9	
	ASBVs	-1.3	-0.2	3.1	10.5	0.7	3.6	-0.5	-0.3	128.8	
46	15/NBS020	15.4	20.8	49.0	108.8	30.5	40.0	20.0	2.5		
	Single										
	Yearling Actual										
	EBVs	0.6	1.7	-3.6	8.0		0.5			95.5	
	ASBVs	-0.9	0.5	0.4	11.1	1.0	0.6	-0.7	-0.1	114.7	
47	15/NBS030	15.9	16.4	54.0	0.0	31.0	40.5	19.0	2.5		
	Single										
	Yearling Actual										
	EBVs	0.4	0.2	-1.0	1.6		-1.6			91.5	
	ASBVs	-1.0	-0.5	0.7	1.9	0.5	0.4	-0.7	0.0	106.4	
48	15/ESE014	15.6	16.0	65.0	102.9	29.5	42.5	22.0	3.0		
	Single										
	Yearling Actual										
	EBVs	0.5	-0.3	7.7	0.7		0.1			90.3	
	ASBVs	-0.8	-1.2	6.8	1.5	1.1	2.0	0.3	0.2	106.7	

LOT	TAG ID	MIC	CV	SL	CFW	WWT	YWT	EMD	FAT	10% + SS + WEC	PURCHASER
49	15/X1000	16.3	14.7	61.0	117.6	30.5	45.0	22.0	3.0		
	Single										
	Yearling Actual	0.9	-1.0	1.5	4.6		-0.4			101.6	
		-0.3	-1.7	5.3	6.7	0.6	1.8	-0.1	0.1	119.4	
50	15/ESE055	15.3	15.7	63.0	65.3	26.5	40.5	23.0	3.0		
	Twin										
	Yearling Actual	-0.2	-0.9	5.5	-4.3		-1.2			104.3	
		-1.3	-1.9	5.8	-9.0	0.4	0.1	0.7	0.3	116.4	
51	15/ESB150	14.6	17.8	72.0	73.5	22.0	38.5	23.0	3.0		
	Twin										
	Yearling Actual	-0.6	0.2	10.7	0.4		1.6			105.7	
		-1.4	-0.7	11.4	7.0	1.2	3.7	0.7	0.4	130.6	
52	15/STD004	14.2	16.2	64.0	90.6	22.0	36.5	20.0	2.5		
	Single										
	Yearling Actual	-0.7	0.4	7.3	3.9		-3.7			115.0	
		-1.5	-1.0	7.5	3.6	-0.6	0.1	-0.5	-0.2	131.9	
53	15/SN2103	14.5	14.5	49.0	85.7	-	36.5	20.0	3.0		
	Twin 14 months										
	Yearling Actual	0.0	-0.5	-3.6	-4.0		5.3			84.9	
		-1.3	-0.5	5.3	3.7	1.9	4.6	0.0	0.3	120.3	
54	15/PEA021	13.6	22.1	42.0	100.0	35.0	49.0	23.0	2.5		
	Single										
	Yearling Actual	-1.2	2.7	-5.8	-2.8		3.2			89.0	
		-2.1	1.6	-1.7	8.1	2.0	4.3	-0.3	-0.2	125.6	

LOT	TAG ID	MIC	CV	SL	CFW	WWT	YWT	EMD	FAT	10% + SS + WEC	PURCHASER
55	15/NBQ104	14.6	17.1	63.0	83.5	27.5	42.5	22.0	3.0		
	Single										
		-0.4	-0.1	1.5	3.0		5.8			110.2	
	ASBVs	-1.3	-0.3	5.1	8.6	1.1	4.1	0.0	0.3	124.8	
56	15/ESB103	14.6	14.4	58.0	100.0	0.0	35.0	21.0	2.5		
	Single										
		-0.6	-0.5	3.4	5.2		-0.5			112.6	
	ASBVs	-1.5	-1.7	6.0	5.9	0.1	0.5	0.3	0.0	137.0	
57	15/LEB088	15.9	17.0	69.0	91.2	27.5	41.0	22.0	3.0		
	Twin										
		0.2	0.2	5.7	-4.2		-0.8			100.6	
	ASBVs	-0.6	-1.2	9.2	3.1	1.1	1.7	0.4	0.3	126.0	
58	15/SN2109	14.9	14.1	61.0	103.6	-	37.5	21.0	3.0		
	Twin 14 months										
		0.3	-1.0	3.2	1.1		3.3			106.5	
	ASBVs	-1.2	-1.5	8.8	8.0	1.9	4.1	0.1	0.2	130.1	
59	15/ESB134	15.0	14.0	61.0	105.9	32.5	47.5	23.0	3.5		
	Single										
		-0.4	-1.3	4.1	3.6		6.4			112.2	
	ASBVs	-1.4	-1.3	8.0	6.9	0.9	3.5	0.2	0.3	141.3	
60	15/LEB061	14.9	14.1	49.0	102.4	25.5	44.5	22.0	2.5		
	Twin										
		-0.2	-1.0	-4.0	-6.6		0.2			88.5	
	ASBVs	-1.4	-1.2	2.2	3.8	0.3	1.8	0.0	-0.3	112.4	

Lots 61 – 72

PRIVATE/MINI AUCTION

RAMS

2015 drop rams

Opening bid \$800

LOT	TAG ID	MIC	CV	SL	CFW	WWT	YWT	EMD	FAT	10% + SS + WEC	PURCHASER
61	15/BUA024	15.6	19.2	65.0	125.3	29.5	46.0	22.0	3.0		
	Twin										
	Yearling Actual	0.4	1.1	6.3	13.0		7.0			116.4	
		-0.8	-0.3	7.7	18.9	2.5	5.0	0.1	0.0	146.9	
62	15/ESE033	14.1	19.9	53.0	94.1	32.5	35.5	21.0	2.5		
	Twin										
	Yearling Actual	-0.7	1.5	2.1	1.4		-4.4			115.5	
		-1.6	0.1	3.4	1.1	1.7	-1.6	0.2	-0.1	127.5	
63	15/ESE034	13.6	16.9	56.0	91.2	33.0	40.5	21.0	2.5		
	Twin										
	Yearling Actual	-1.0	0.3	5.1	-5.5		0.1			122.6	
		-2.1	-0.8	4.3	-3.1	2.0	0.3	0.0	-0.1	138.8	
64	15/HAA036	14.6	19.9	61.0	110.0	34.0	43.0	21.0	2.5		
	Single										
	Yearling Actual	-0.2	0.8	7.1	10.2		2.9			120.8	
		-1.4	-0.3	4.8	12.4	1.0	1.4	-0.4	-0.3	136.6	
65	15/NBM160	14.3	18.9	62.0	77.6	26.5	41.5	23.0	3.0		
	Twin										
	Yearling Actual	-0.9	0.3	2.1	-6.5		0.9			104.9	
		-1.8	-0.7	4.1	-7.1	0.3	0.2	0.8	0.2	114.0	
66	15/NBQ099	14.2	17.0	67.0	125.3	30.0	42.5	22.0	3.0		
	Single										
	Yearling Actual	-0.6	0.9	7.7	9.3		1.2			113.0	
		-1.8	-0.2	7.2	11.6	0.5	1.1	0.0	0.2	139.7	

LOT	TAG ID	MIC	CV	SL	CFW	WWT	YWT	EMD	FAT	10% + SS + WEC	PURCHASER
67	15/NBS014	Yearling Actual	15.3	15.0	64.0	101.2	26.5	46.0	23.0	3.0	
	Single	EBVs	0.3	-0.5	1.3	4.3	4.2			100.1	
		ASBVs	-1.0	-1.0	5.5	9.0	0.6	2.2	-0.3	-0.1	130.1
68	15/NBS016	Yearling Actual	13.8	17.4	45.0	74.7	33.0	46.5	23.0	3.0	
	Single	EBVs	-0.3	0.1	-3.6	-4.6	11.4			89.1	
		ASBVs	-1.7	-0.1	0.6	1.1	2.1	3.7	-0.2	0.2	102.7
69	15/RH027	Yearling Actual	16.8	14.9	58.0	93.5	29.5	42.0	21.0	2.5	
	Twin	EBVs	1.4	-1.2	3.7	5.2	0.9			93.2	
		ASBVs	0.1	-2.0	4.7	1.7	2.2	3.2	0.2	0.1	100.8
70	15/SN2149	Yearling Actual	14.0	13.6	62.0	103.6	-	42.0	22.0	3.0	
	Single 14 months	EBVs	-0.7	-0.6	6.5	6.7	8.2			122.2	
		ASBVs	-1.9	-0.7	7.4	12.7	2.5	6.4	-0.7	-0.4	150.0
71	15/STD006	Yearling Actual	14.8	20.3	51.0	95.3	32.0	41.5	21.0	2.5	
	Single	EBVs	-0.5	1.9	-1.2	-1.8	-0.3			97.7	
		ASBVs	-1.5	0.6	1.2	1.3	1.3	2.5	-0.4	0.0	108.5
72	15/X0692	Yearling Actual	15.4	20.1	73.0	124.1	27.5	44.0	23.0	3.0	
	Single	EBVs	0.2	1.4	9.6	5.9	-0.7			99.7	
		ASBVs	-1.0	-0.1	10.4	13.9	0.6	2.7	0.3	0.2	133.9

The Mountain Dam

- 20 kilometres north east of Balmoral
- 75 kilometres south of Horsham
- 100 kilometres north of Hamilton
- Take Silcocks Road at signs off the Telangatuk East – Rocklands Road

429 Silcocks Road, Telangatuk East Vic.

